



DOSSIER

COURSE ENHANCEMENT GRANT FOR EXPERIENTIAL LEARNING ACTIVITIES

2016 SPRING SEMESTER, URBAN STUDIES DEPARTMENT

URBAN STUDIES COURSES:

SPECIAL PROBLEMS IN ENVIRONMENTAL STUDIES (URBST373)

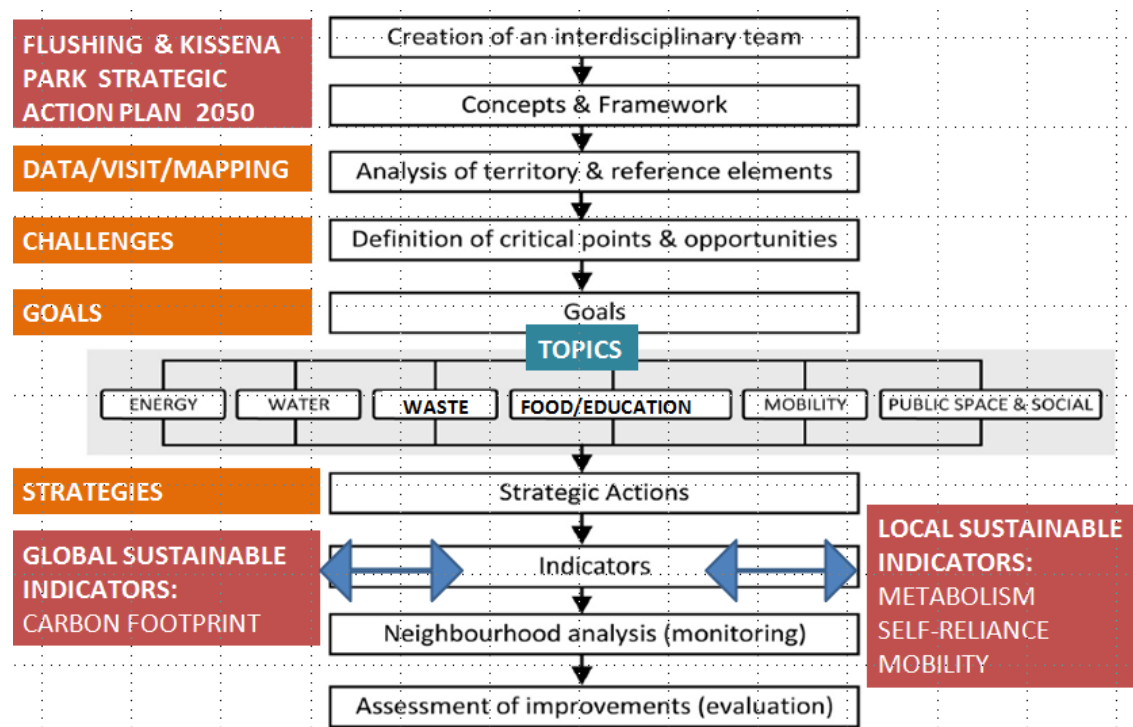
SELECTED TOPICS IN URBAN STUDIES (URBST7603)

EXPERIENTIAL LEARNING GOALS, FRAMEWORK, TOOLS, ACTIVITIES AND RESULTS

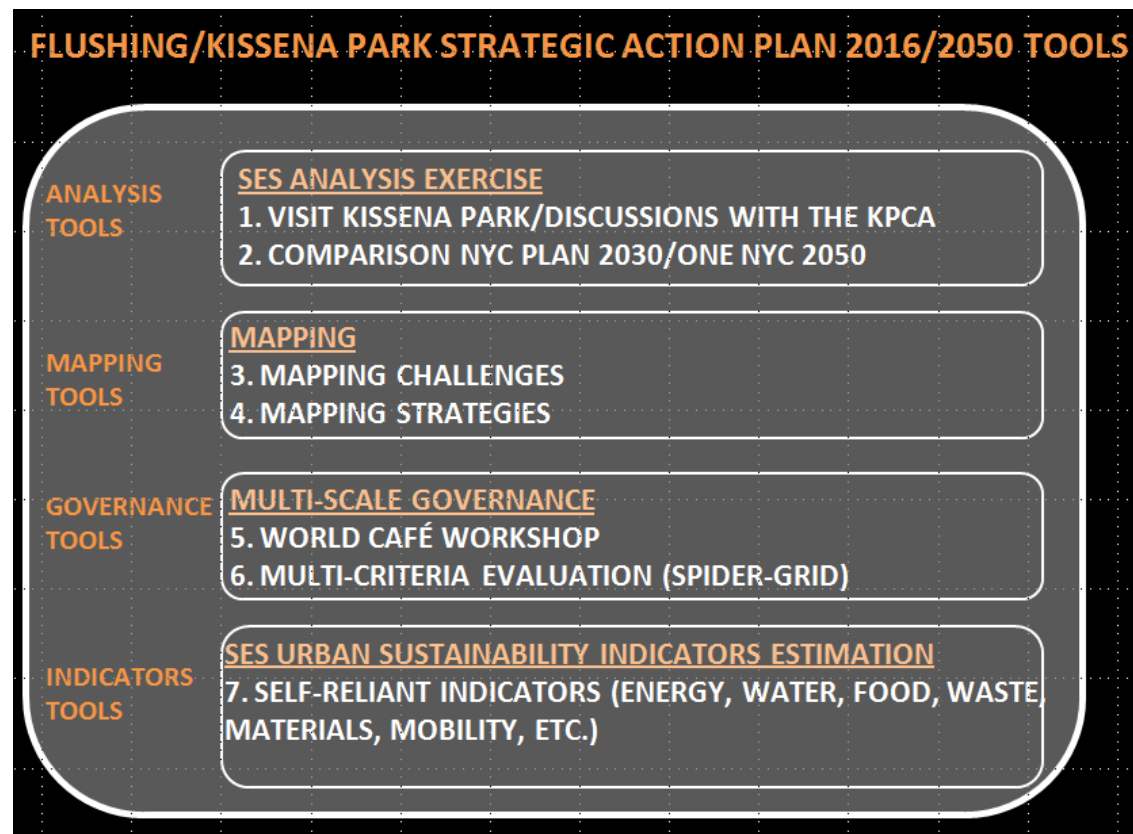
373/7603 FINAL RESEARCH COURSE GOALS:

Develop a Final Research Project to provide students the opportunity to do a research in Urban Sustainability Strategies for the social-ecological systems (Flushing neighborhood and Kissena Creek green corridor). The framework of the research will content an analysis of the social-ecological system, visits, discussions with the local communities, define goals, create strategies and develop a Flushing/Kissena Park Self-reliant Action Plan for 2050 . The goal is to promote a new link and future research project for a Strategic Action Plan 2050 between the urban studies department and the local communities of the Kissena Park at Flushing neighborhood.

373/7603 FINAL RESEARCH COURSE METHODOLOGY FRAMEWORK:



373/7603 FINAL RESEARCH COURSE STRATEGIC ACTION PLAN TOOLS:



373/7603 FINAL RESEARCH COURSE ACTIVITIES:

1. VISIT KISSENA PARK/DISCUSSIONS WITH THE KPCA
2. COMPARISON NYC PLAN 2030/ONE NYC 2050
3. GIS MAPPING CHALLENGES
4. MAPPING STRATEGIES
5. WORLD CAFÉ WORKSHOP
6. MULTI-CRITERIA EVALUATION (SPIDER-GRID)
7. SELF-RELIANT INDICATORS (ENERGY, WATER, FOOD, WASTE, MATERIALS, MOBILITY, ETC.)

1. VISIT TOUR KISSENA PARK/DISCUSSIONS WITH THE KPCA

We organize several tours and discussions to the Kissena Lake Park, Kissena Corridor Park and Queens Botanical Garden. Meetings and Discussions with the local agents (Kissena Park Civic Association).



Photo 1: Meeting with the Vice-President of the Kissena Park Civic Association, Carsten Glaeser.

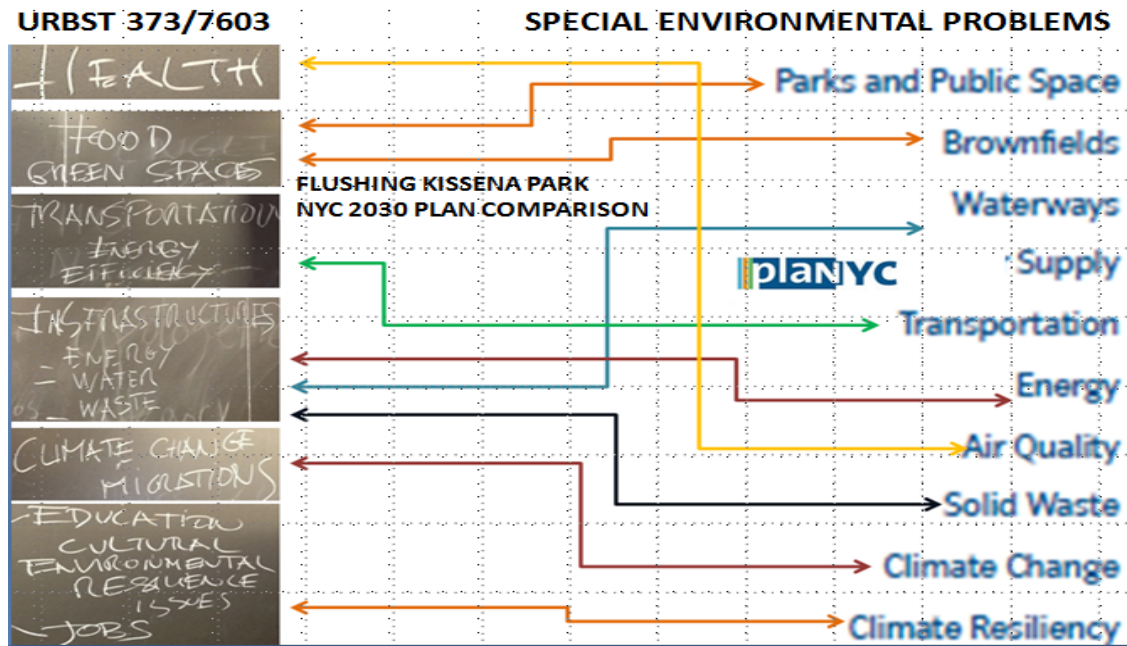


Photo 2: Meeting & Discussion with the Flushing/Kissena Park Local Communities.



Photo 3: Tour with the Vice-President of the Kissena Park Civic Association

2. COMPARISON NYC PLAN 2030/ONE NYC 2050



3. GIS MAPPING CHALLENGES

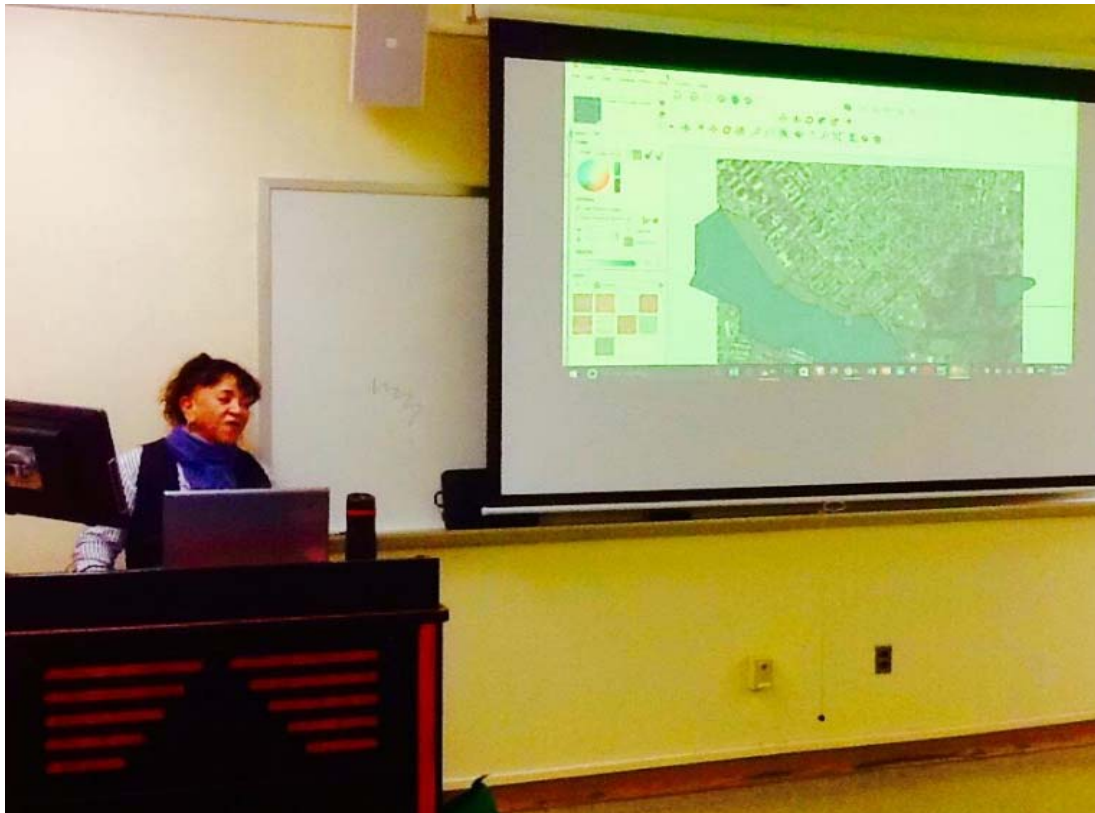


Photo 5: GIS Mapping Learning session with Lucia Ring, Assistant



Poster 1: Students GIS Mapping for the Flushing/Kissena Challenges

4. MAPPING STRATEGIES



Poster 2: Students GIS Mapping for the Flushing/Kissena Strategies

5. FLUSHING/KISSENA PARK STRATEGIC ACTION PLAN 2050 WORLD CAFÉ WORKSHOP

World Café Workshop to analyze Strategies, define strategies and Urban Sustainable Indicators

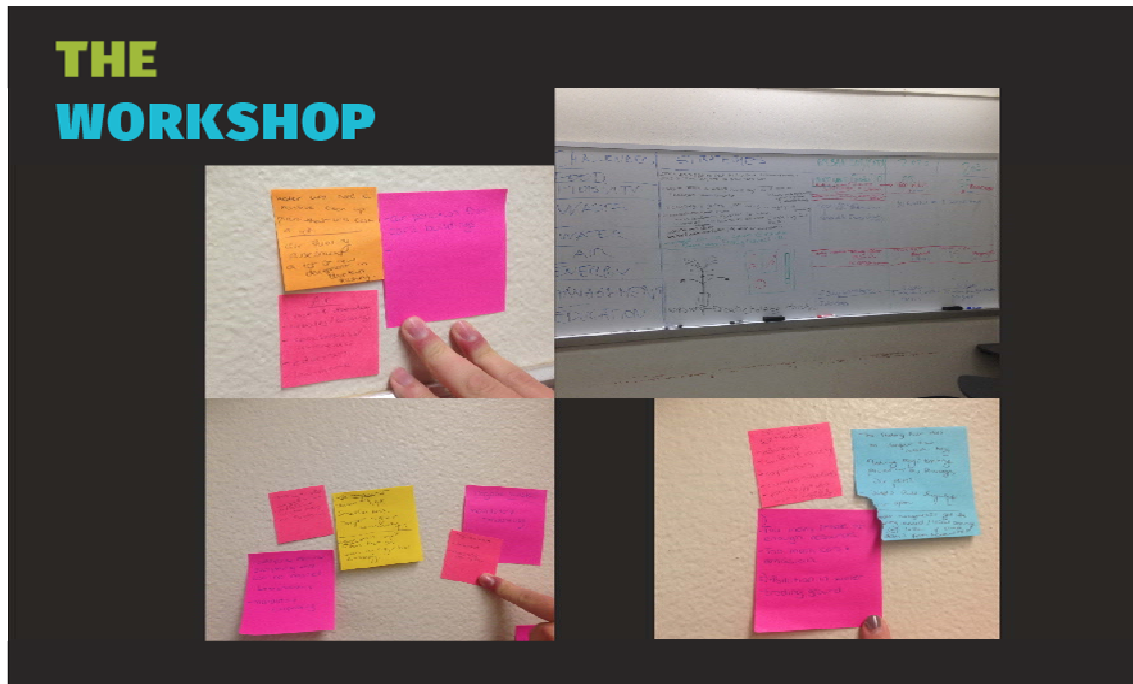


Photo 6: Students World Café Thinking Workshop Sustainable Action Plan

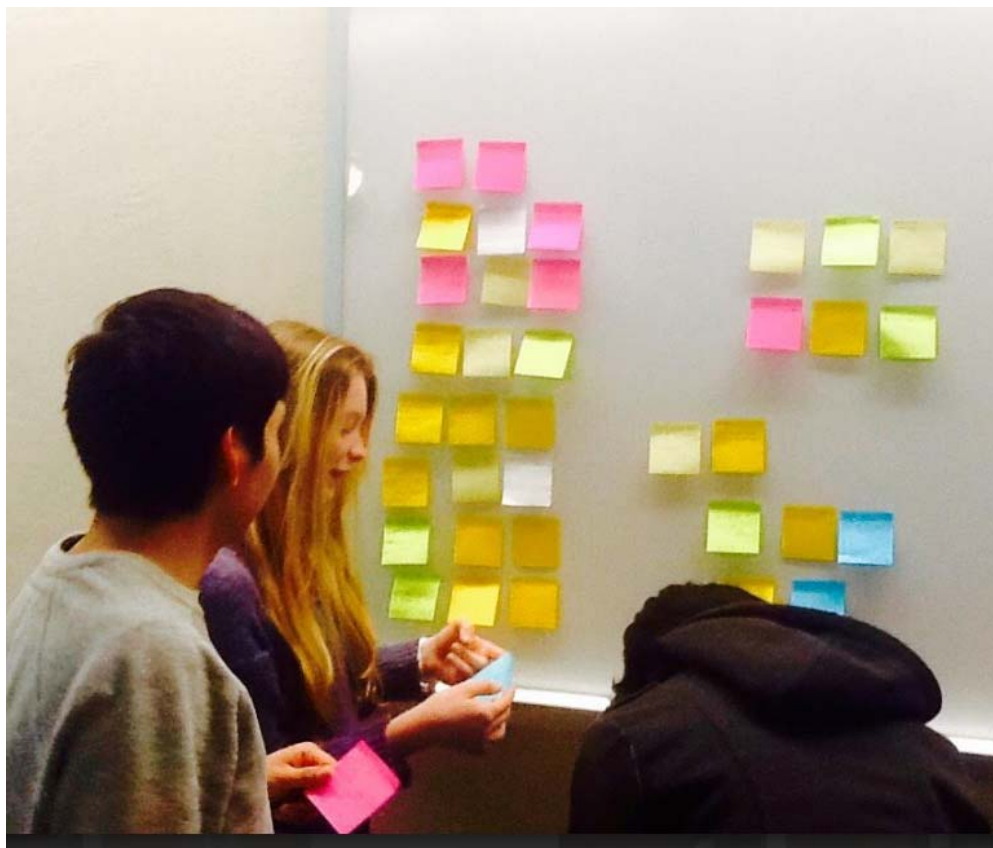


Photo 7: Students World Café Thinking Workshop Sustainable Action Plan

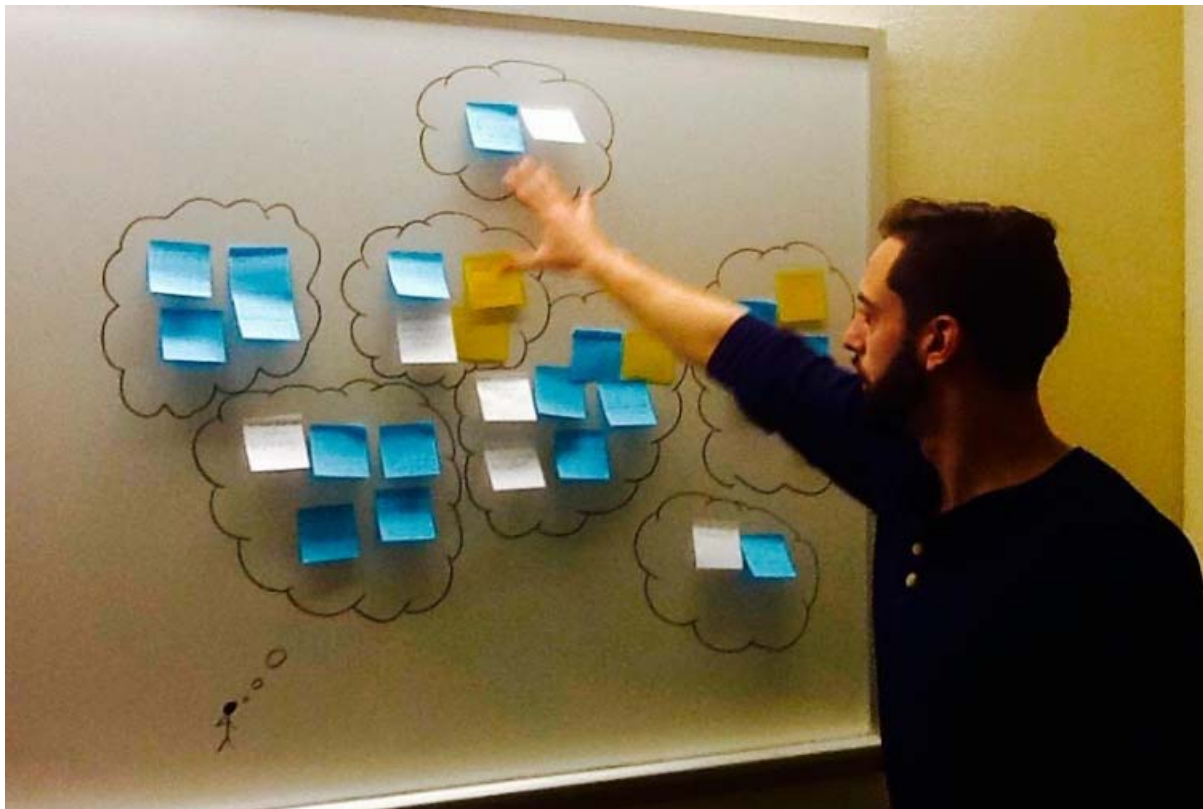


Photo 8: Students World Café Thinking Workshop Sustainable Action Plan

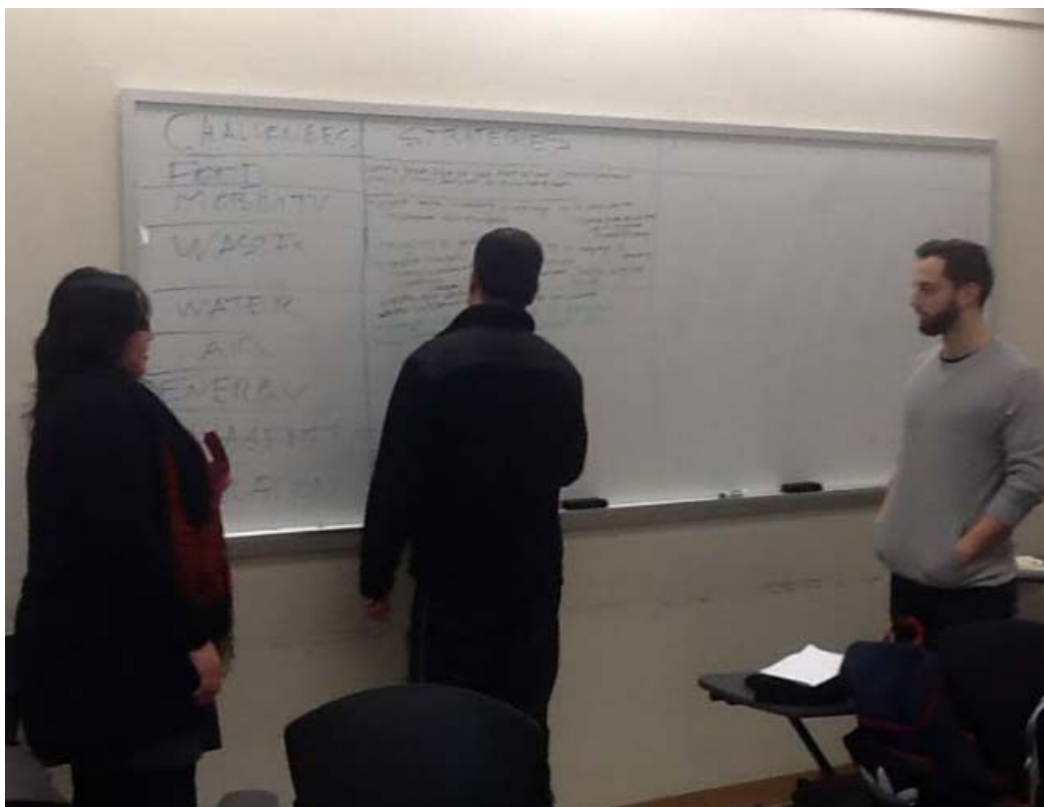


Photo 9: Students World Café Thinking Workshop Sustainable Action Plan

6. MULTI-CRITERIA EVALUATION (SPIDER-GRID)

The students evaluate and grade the Flushing/Kissena Park Sustainable Action Plan Strategies for 2030 and 2050, and created the Strategic Action Plan Vision for 2050.

Energy Building and Infrastructure	Mobility and Compactness	Food Production and Organic Waste	Education and Multi-level governance	Green Space	Water Management
Use solar panels and wind turbines to produce off the grid energy	1 Created cycling system (with 11 stops/each stop with 25 bikes)	3 Create a centralized bandstand/gazebo	3 Have a community hearing/cultural meeting to understand the gardening practices and park space uses of the ethnicities present	3 More connecting green spaces	0 installing rain basins to reduce flooding
Use thermal plant to provide energy to local neighborhood	2 Bicycle tournament ending in the professional track.	4 Plant trees in an organized manner for the landscape	4 Create signage throughout the park to indicate natural sights and plants throughout the park	4 modify paths so they are made of a more permeable material (ex: permeable interlocking)	0 Environmental Signage with additional instruction, fruit vines can be cultivated
Use hydro system in the lake to produce energy	2 Use all buildings in the area to promote education in a large scale.	2 Bring attention to beautiful areas of the park such as Cherry Blossoms or other flowers that grow during the Spring	4 Have a public hearing to discuss how individuals would want the signage to be scripted in language that is coherent to them, such as localized terms	4 Fruit bearing trees must be suitable for Winter months. Trees commonly found in Queens include: peaches, pears, apples, and figs	0 Bioswales and rain gardens for the neighborhood to absorb the rainwater
Reduce green house emission in kissena park	2 Create interactive phone application for the whole Flushing Social ecological system.	5 Introduce plants that support pollinators such as Buddlejia/Buddleia a known commonly as butterfly bush	4 Have students from local schools help design the signage	3 addition of trees with larger root systems, more native trees	0 Bioswales and rain gardens for the neighborhood

Table 1: Kissena Self-reliant Topics Strategies (Energy, Water, Education, Food, Waste and Mobility)

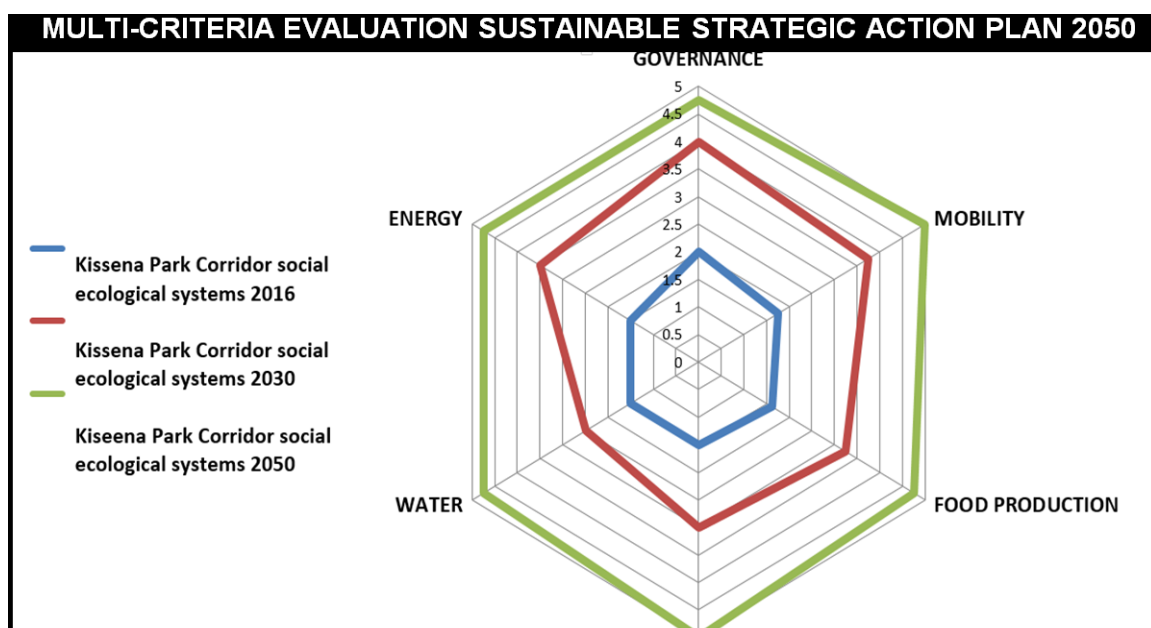


Table 2: Flushing/Kissena Self-reliant Strategic Action Plan Vision for 2030/2050

7. SELF-RELIANT INDICATORS (ENERGY, WATER, FOOD, WASTE, MATERIALS, MOBILITY, ETC.)

The students estimated the Flushing/Kissena Corridor Park self-reliant Indicators for Energy, Water, Food Production, Organic Waste and Environmental Education (see Final Presentation)

RESULTS

This Spring semester 2016, students from the course *Special Problems in Environmental Studies* (URBST 373/7603) at Queens College Urban Studies Department prepare a Strategic Action Plan for Flushing/Kissena Park Social-Ecological System in order to analyze, identify challenges and promote sustainable strategies that affect the Flushing community. This proposal is related to promote sustainable ecosystem services such as local food production, environmental education, renewal energies, closed water and waste life cycle, and sustainable mobility.

The students worked in coalition with the Kissena Park Civic Association to create innovative and self-reliant strategies to resolve these issues. The students have created a project for the community that can be implemented and effective to make the Flushing community a greener, healthier, and more resilient place to live for all. On the 18th of May 2016, we organized a Final Research Presentation at the Golwin-Ternbach Museum at Queens College Campus with the attendance of Flushing/Kissena Park Local Communities and local Experts from Queens College. Find enclosed the presentation document, pictures and the video recorder of the event.

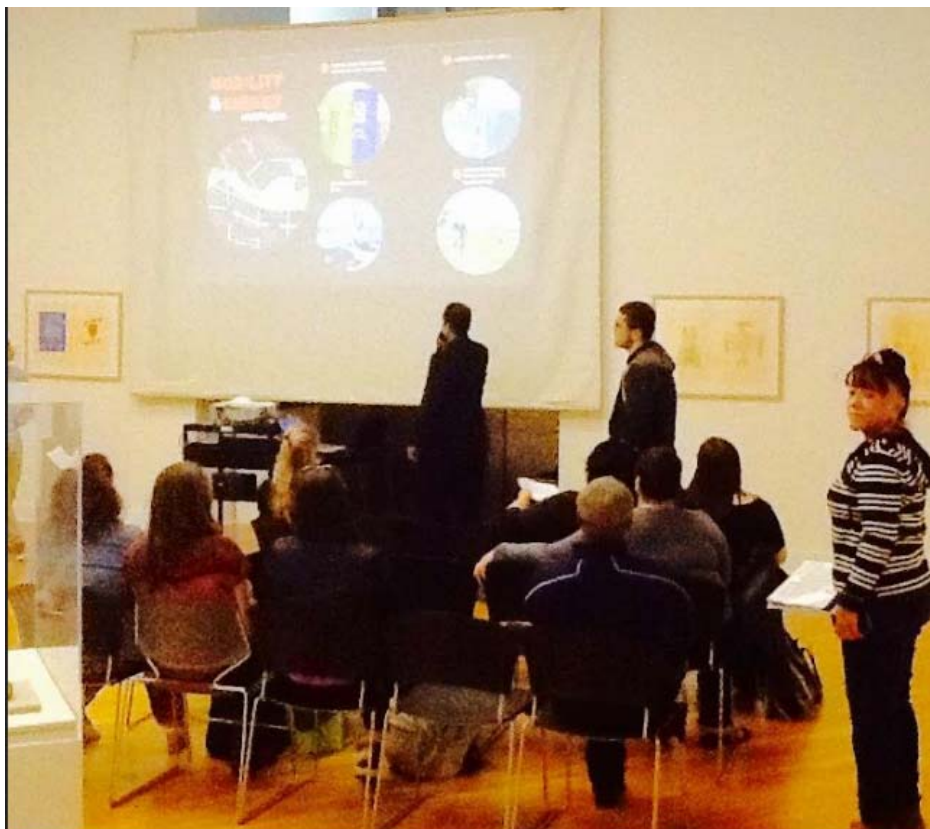


Photo 10: Students Final Research Presentation to the Local Communities



Photo 11: Students Final Research Presentation to the Local Communities



Photo 12: Students Final Research Presentation to the Local Communities



Photo 13: Students Final Research Presentation to the Local Communities

CREDITS

Final Presentation on May 18th at 5 p.m. at the Godwin Museum at Queens College

COURSE 373 UNDERGRADUATE STUDENTS:

Eggers, Dana M.
Irrizarry, Vincent S.
Kisarewski, Nicholas
Moser Ryan M.
Rocha, Christine M.
Shahid, Zee Han
Toala, Marco F.

COURSE 7603 MASTER URBAN AFFAIRS STUDENT

Landsdorf, Kate.

LOCAL COMMUNITY AGENTS

Kissena Park Civic Association
Carsten W. Glaeser MPhil, Ph.D, ASCA
Glaeser Horticultural Consulting Inc
Sustainable Initiatives Department of QC
Queens College Environmental Club

PROFESSORS

Alba Lucia Ring, Assistant
Rafael de Balanzo, Visiting Lecturer
rafael.debalanzojoue@qc.cuny.edu