



**MSCHE TOWN
HALL**

As you enter,

**Please come to the
front of the room to:**

**SIGN IN
&
Pick up your lunch**



MSCHE TOWN HALL

9/17/2025

The background features a series of concentric circles in light gray, some solid and some dashed, creating a ripple effect. A large red speech bubble is centered on the page, containing the text.

WHAT IS INSTITUTIONAL ACCREDITATION?



The reaccreditation process is
an opportunity to celebrate what we do well

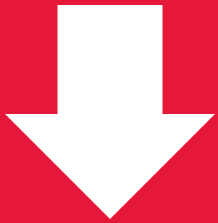
Self-Study Process

Oct '23: Self-Study
Institute



Nov '23 - Jan '24: Working Groups and
Operational Excellence Team Assembled

Spr '24: Research Q's



Apr '24: Self-Study
Design Draft



Self-Study Design
Queens College



May '24: Visit from
MSCHE VP Liaison

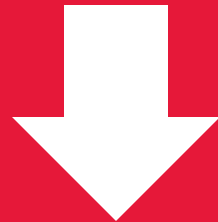


Summer '24: Revision, Approval of SSD

Self-Study Process

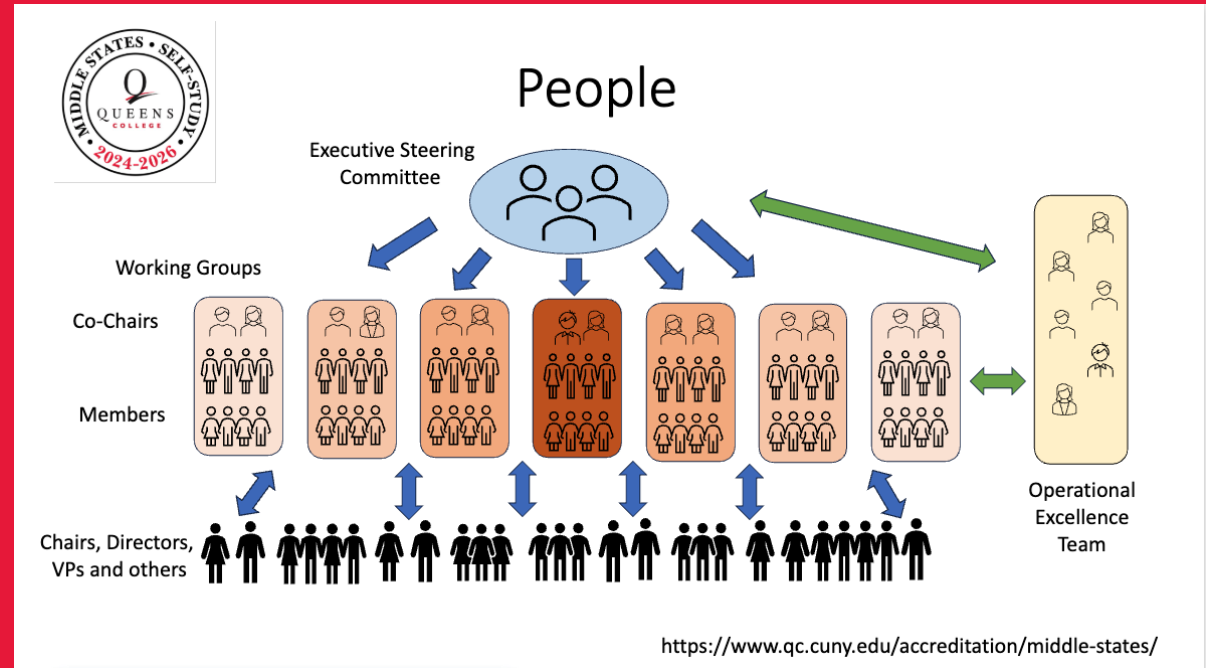
Fall '24: Develop evidence requests

Fall '24: Collect documentation
across campus



Spr '25: Analyze Evidence
Draft Chapters

Summer '25: Self-Study Report Draft



Self-Study Report
Internal Draft for Feedback
Queens College



Fall '25: Collect
Feedback and
Revise SSR

Lessons from our collective work at the College

Susan Davis
Ivan-Scott Lee



Deep diving into the data, assessment plans, and reports

Standard V: Educational Effectiveness Assessment

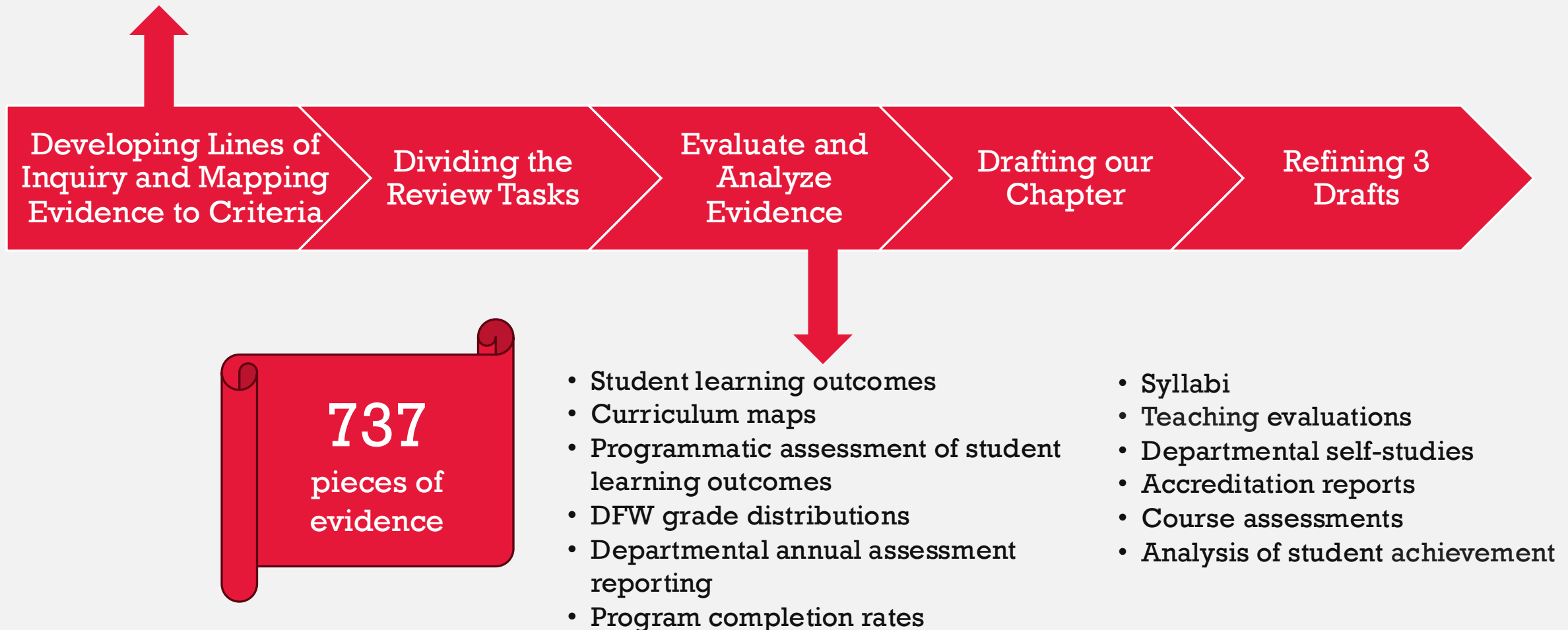
Assessment of student learning and achievement demonstrates that the institution's students have accomplished educational goals consistent with their program of study, degree level, the institution's mission, and appropriate expectations for institutions of higher education.

Bobbie Kabuto

Christopher Williams

To what extent is the College motto articulated, integrated, and assessed via student learning outcomes?

In what ways does Queens College employ a transparent quality assurance process in which assessment results are systematically collected, disaggregated, and used to improve and sustain its foundation for teaching, learning, and scholarship?



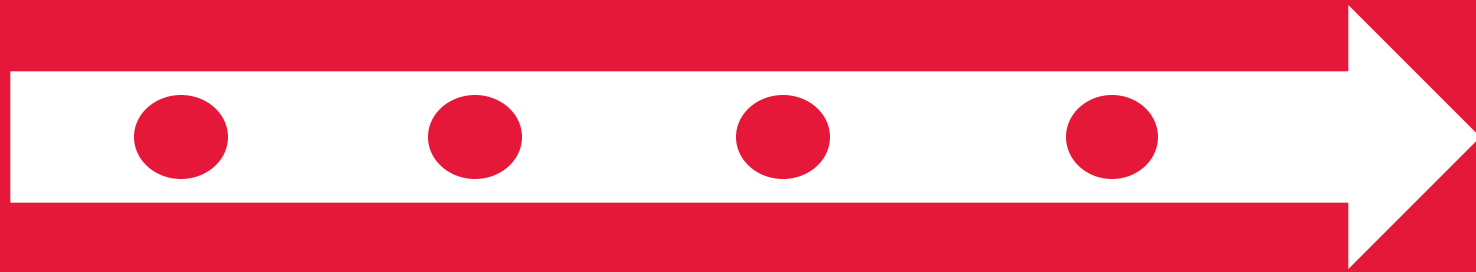
The background features a series of concentric circles in light gray, some solid and some dashed, creating a ripple effect. A large red speech bubble is centered on the slide, containing the main text.

Lessons from accreditation:

Complexity and the importance of the peer model

Dan Weinstein
Leslee Gray

Timeline for what will happen next
and how people can be involved





Team Chair Visit: October 7, 2025

Peer Team Visit: March 22-25, 2026

RSVP for the Staff Session During
the MSCHE Team Chair Visit



**1pm on Tuesday
10/7/2025**

RSVP for the Faculty Session
During the MSCHE Team Chair
Visit



**2pm on Tuesday
10/7/2025**

RSVP to the Team Chair sessions!

How does the Self-Study process benefit the College?

- **Introspection leads to improvements**
- **Holistic view of the college**
- **Standards are known best practices**



How have you
meaningfully engaged the
College community?

- **Ensured a diversity of opinions**
- **Collected information across the college**
- **Frequent communication/ reporting out**

Will this report inform any
concrete changes at QC?

How and when?

- **Internal and external recommendations**
- **Strategic planning**
- **MSCHE Team recommendations**
- **It has already!**

My department has been
doing exciting work that
I don't see reflected in the
Self-Study. Why not?

- **We're human**
- **Need for better reporting and communication**
- **Let us know!**

Feedback on
the Self-Study
Report Draft

